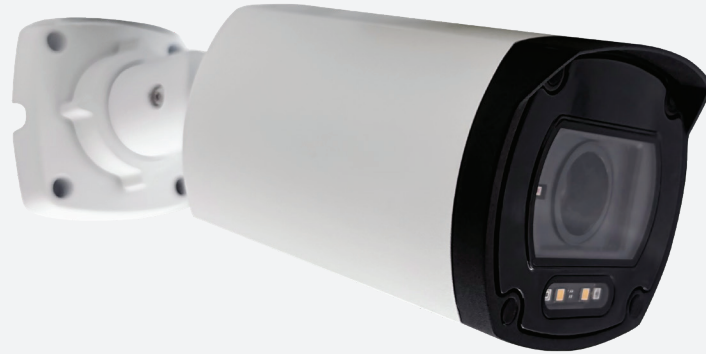


NCr-553C-R1Z/NCr-832C-R1Z

5MP/8MP Dual-Light Motorized P-iris Bullet, Edge Analytics, Smart IR, IP67, IK10



Main Features

- Dual Light technology (white light/Smart IR) up to 30M
- Extreme WDR 120dB
- Remote zoom and focus for full-area coverage
- Analytics with deep learning minimize false alarms (ONVIF® Profile M)
- Edge storage enables failover recording (ONVIF® Profile G)
- IP67 weatherproof, IK10 vandal resistance
- NDAA Compliance



Product Overview

Dual Light technology combines white LED and infrared (IR) illumination for flexible night surveillance. When people or objects are detected in low light or darkness, the camera automatically switches from IR to white light, providing full-color video and supporting active deterrence. Edge AI analytics provide real-time detection, while audio and I/O connectivity support extended system integration for smarter, proactive security. Robust IP67 and IK10 ratings for deployment in high-risk, vandal-prone environments including correctional facilities, perimeter security zones, defense installations, and critical infrastructure sites.

H.265

H.265 is the latest next generation of video compression technology. This technology could reduce bandwidth to perform excellent video compression rate with lower storage consumption. This new technology can save over 50% data flowloading. This helps to enhance IP camera total system performance dramatically.



Next-generation edge analytics

The camera performs real-time deep learning-based detection and classification while filtering out irrelevant motion. This reduces false alarms and generates actionable metadata for faster investigations and smarter automation. Edge processing also reduces bandwidth usage and improves response times, creating an efficient platform for intelligent security systems and future AI-driven applications.

Adaptive IR

With the advanced Adaptive IR technology, it is not only same as traditional Smart IR to adjust IR output automatically in response to the distance of the object in view. Moreover, it enables consistent illumination for wide & tele angles to maximize image quality. It helps to capture better image quality regardless any kinds of outdoor environments.

DOL WDR @30fps

DOL WDR can overcome challenging lighting conditions. It is capable of capturing both dark and bright part then combining the differences into a scene to generate a highly realistic image.

Specifications

Camera General Information

Image Sensor	NCr-832C-R1Z: 1/1.8" 8MP CMOS progressive sensor NCr-553C-R1Z: 1/2.8" 5MP CMOS progressive sensor
Resolution	NCr-832C-R1Z: Up to 30fps 8MP (3840 x 2160) NCr-553C-R1Z: Up to 30fps 5MP (2592 x 1944)
Lens	NCr-832C-R1Z: Motorized 4.4-9.5mm, F1.35 NCr-553C-R1Z: Motorized 3.29-10.64mm, F1.65
Field of View	NCr-832C-R1Z: D: 139°-55.5° H: 113.8°-43.8° V: 59.1°-27° NCr-553C-R1Z: D: 143.8°-35.7° H: 103.6°-28.5° V: 75.5°-21.4°
Day and Night	True Day / Night
Smart IR	Effective distance is up to 30M Effective distance is up to 10M (white LED)
WDR	Up to 120 dB depending on scene
Minimum Illumination	Color 0.15 lux B/W 0 lux
Image Enhance	Brightness, Contrast, Saturation, Sharpness, Mirror, Flip, Corridor, Anti-flicker, BLC, AWB
Defog	Support
Analytics (In-house VA)	Line Crossing, Object-Counting, Zone Object-Counting, Zone Intrusion, Loitering, Wrong Way, Left, Remove

Video and Audio

Video Compression	H.265 / H.264 / M-JPEG
Smart Compression	Smart GOP
Video Resolution	NCr-832C-R1Z: 3846x2160 to 640x360 NCr-553C-R1Z: 2592 x 1944 to 640x480
Video Quality	CBR, VBR, MJPEG
Frame rate (Max Resolution)	Up to 30fps
Frame rate (Multi-Stream)	NCr-832C-R1Z: Up to 30fps 8MP + 30fps 1080p + 30fps 360p NCr-553C-R1Z: Up to 30fps 2592x1944+ 30fps 1280x720 + 15fps 640x480 (MJPEG)
Audio Streaming	Two-way
Audio Compression	G.711 8KHz/8 bits (A-Law/U-Law)

Network

Interface	10/100 Mbps Ethernet, RJ45
Browser	Edge, Chrome, Firefox, Safari
ONVIF	ONVIF S, G, T, M

Event Management

Event Trigger	Motion detection, Tampering Alarm, Alarm In
Notifications	Send message via e-mail/ Record to FTP/NAS/ SD card, record JPG/mp4

Power & I/O Connector & Environmental

Power	PoE IEEE 802.3af, Class 3
Power Consumption	NCr-832C-R1Z: 8.05W max.(PoE) NCr-553C-R1Z: 7.5W max.(PoE)
Audio In/Out Port	Line-in x 1 ; Line-out x 1
DI/DO	DI x 1; DO x 1
Micro SD Card Slot	microSDXC up to 1TB(Not include SD Card)
Operating Temperature	-40°C to +50°C (IR off) -20°C cold start
Storage Temperature	-40°C (-40°F) to +60°C (140°F)
Humidity	10% to 90% RH(non-condensing)
Regulation	CE/FCC/UL
Waterproof	IP67
Vandal Resistant	IK10
Application	SDK available for application development

Packaging Information

Weight	Unit: NCr-832C-R1Z: 815g NCr-553C-R1Z: 775g Package: NCr-832C-R1Z: 1.09kg NCr-553C-R1Z: 1.13kg
Dimension	Unit: 94.2 mm x 82.5mm x 235.7 mm Package: 285 x 175 x 125mm per unit

Dimension Drawing

